

Nature's Stash Cloud 9

 Sample ID: SA-07092021-2632
 Batch: 002
 Type: Finished Materials
 Matrix: Oil / Liquid - MCT Oil

 Received: 07/09/2021
 Completed: 07/13/2021

Client
 Nature's Stash
 6607 Bridger Court
 Indianapolis, IN 46268
 USA
 Lic. #: 18-0229

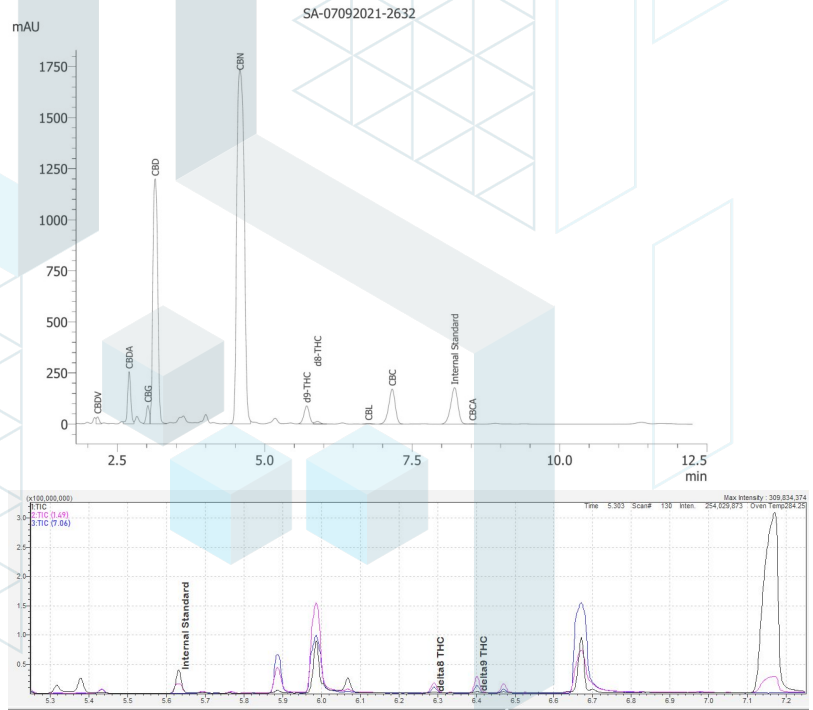

Summary

Test Cannabinoids	Date Tested 07/13/2021	Status Tested
-----------------------------	----------------------------------	-------------------------

Cannabinoids by HPLC-PDA and GC-MS/MS

0.00865 % Total Δ9-THC	2.57 % CBN	4.61 % Total Cannabinoids	Not Tested Moisture Content	Not Tested Foreign Matter	Yes Internal Marker Recovered
----------------------------------	-----------------------------	-------------------------------------	---------------------------------------	-------------------------------------	--

Analyte	LOD (%)	LOQ (%)	Result (mg/mL)	Result (%)
CBC	0.00095	0.00284	1.16	0.12418
CBCA	0.00181	0.00543	1.142	0.12225
CBCV	0.0006	0.0018	ND	ND
CBD	0.00081	0.00242	15.286	1.63641
CBDA	0.00043	0.0013	0.91	0.09742
CBDV	0.00061	0.00182	0.108	0.01156
CBDVA	0.00021	0.00063	ND	ND
CBG	0.00057	0.00172	0.328	0.03511
CBGA	0.00049	0.00147	ND	ND
CBL	0.00112	0.00335	0.02	0.00214
CBLA	0.00124	0.00371	ND	ND
CBN	0.00056	0.00169	23.98	2.56712
CBNA	0.0006	0.00181	ND	ND
Δ8-THC	0.00104	0.00312	0.094	0.01006
Δ9-THC	0.00076	0.00227	0.0808	0.00865
Δ9-THCA	0.00084	0.00251	ND	ND
Δ9-THCV	0.00069	0.00206	ND	ND
Δ9-THCVA	0.00062	0.00186	ND	ND
Total Δ9-THC			0.0808	0.00865
Total CBD			16.0841	1.72185
Total			43.1088	4.61491



ND = Not Detected; NT = Not Tested; LOD = Limit of Detection; LOQ = Limit of Quantitation; RL = Reporting Limit; Δ = Delta; Total Δ9-THC = Δ9-THCA * 0.877 + Δ9-THC; Total CBD = CBDA * 0.877 + CBD



07/13/2021

This product or substance has been tested by KCA Laboratories using validated testing methodologies and an ISO/IEC 17025:2017 accredited quality system. Values reported relate only to the product or substance tested. The reported result is based on a sample weight. Unless otherwise stated, results of tests performed on all quality control samples met criteria for acceptance established by KCA Laboratories. KCA Laboratories makes no claims as to the efficacy, safety or other risks associated with any detected or non-detected amounts of any substances reported herein. This Certificate of Analysis shall not be reproduced except in full, without the written approval of KCA Laboratories. KCA Laboratories can provide measurement uncertainty upon request.

